

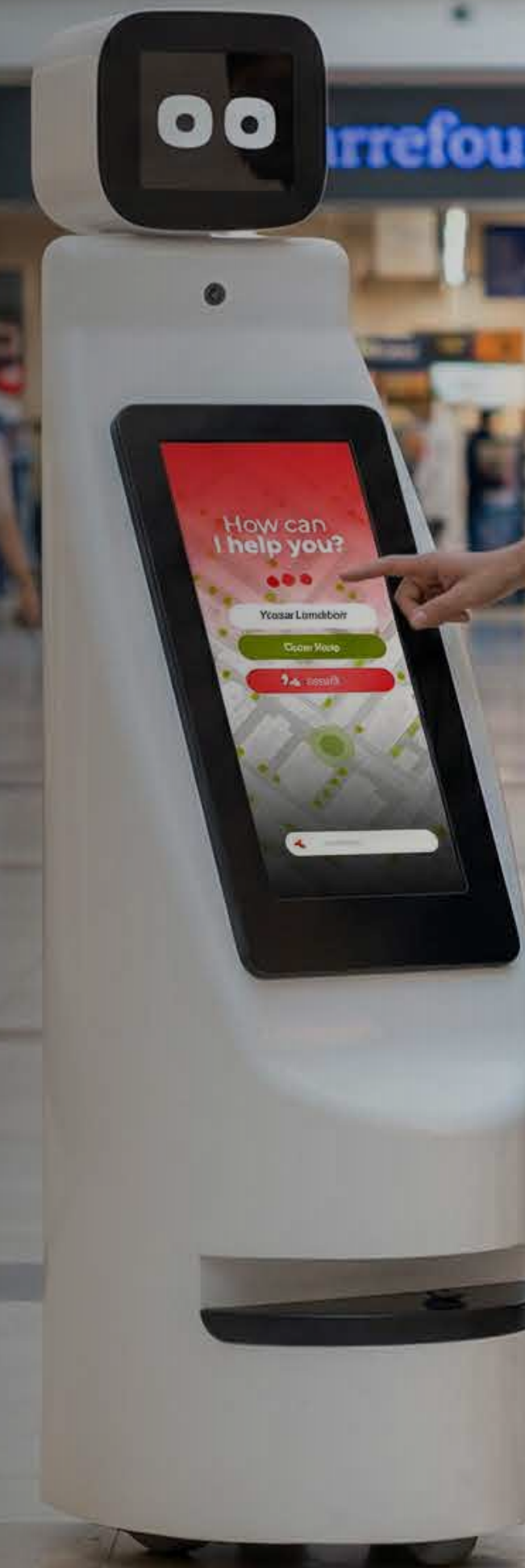
# GuideBot

Professional Technical Datasheet



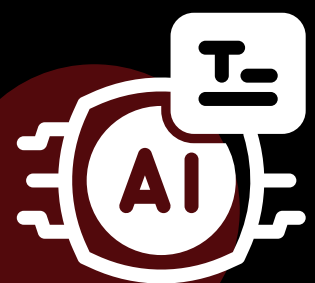
# Autonomous AI Concierge & Interactive Signage Solution

The Robox GuideBot is an advanced autonomous service robot engineered to redefine the guest experience. By integrating high-precision navigation, a 24" digital signage, and AI model. GuideBot serves as a 24/7 host, guide, and marketing powerhouse for modern facilities.



# Core Interaction & AI Capabilities

The brain of GuideBot is designed for natural, meaningful engagement.



## Multilingual AI Engine:

Native support for Egyptian Arabic (Local Dialect) and English.



## Voice Interaction:

noise-canceling microphone for clear speech recognition in busy environments.



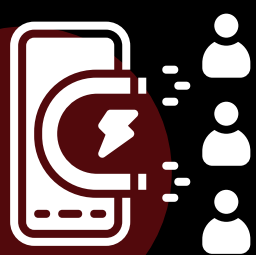
## Entertainment:

Integrated "Spin & Win" games and photo-booth functionality.



## Knowledge Base:

Fully customizable to pre-load FAQs, and service menus.



## Lead Generation:

Interactive forms to capture user data (Name, Phone, Email).



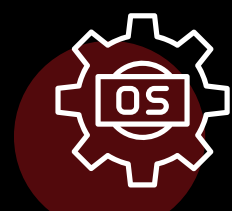
## Instant Delivery:

On-board camera captures high-res photos and sends them to users immediately via email.

# Navigation & Mobility

## ROS-Powered

Industrial-grade movement for safe, autonomous operation in public spaces.



Operation System  
**ROS (Robot Operating System)**  
with SLAM navigation.



Sensor  
**Sensor Fusion of multiple sensors**  
like LiDAR, 3D Depth Camera and  
**Ultrasonics.**



Battery Charging Time  
**8 hours**



Surface Compatibility:  
**Marble, Tile, Low-pile Carpet,**  
**Cement, and Wood.**



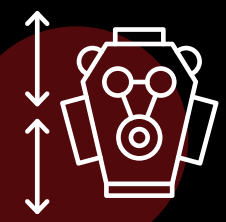
Drive Width (Min):  
**80 cm (Can navigate**  
**standard doors and aisles).**



Max Speed:  
**1.0 m/s (Adjustable for safety).**



# Technical Specifications



Dimensions (LxWxH)  
**500x 500x 1500mm**



Weight  
**80 kg (High stability)**



Runtime  
**9 Hours Continuous Operation**



Battery Charging Time  
**9 Hours (Overnight/Automatic)**



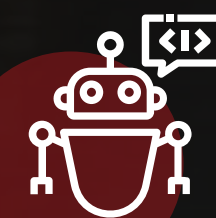
Connectivity  
**Wi-Fi, Bluetooth, LTE (Optional)**



Upper screen Size  
**10-inch**



Main Screen Size  
**24-inch**



AI commands  
**Voice interaction, screen typing**

# Application & Deployment

GuideBot is versatile enough to provide ROI in various sectors:



## Retail & Malls:

Wayfinding to shops, mobile advertising, and "Spin & Win" promotions.



## Hospitality & Hotels:

Receptionist duties and tourist info.



## Corporate Offices:

Visitor registration and employee engagement.



## Healthcare:

Directing patients to clinics and reducing administrative staff workload.



## Museums & Galleries:

"Docent Mode" providing audio-visual tours of specific exhibits.



## Events & Expos:

High-tech attraction for lead generation and brand awareness.

# Unique Competitive Advantages



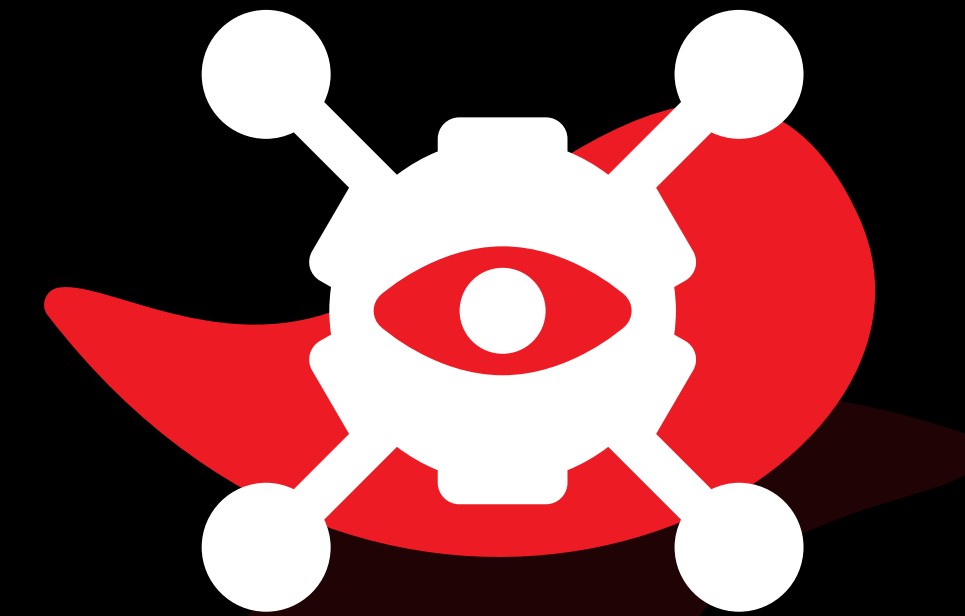
## Local Cultural Tuning:

Our AI is trained on local linguistic nuances (Egyptian Arabic).



## Safety First:

Equipped with sensors "Safety-Ring" to prevent collisions even in dense foot traffic.



## Patrol & Security:


Integrated surveillance mode with remote video monitoring for after-hours facility safety.



# Robox

Crafting powerful machines

**Crafting powerful machines**  
Contact us NOW!

 [info@robox-industries.com](mailto:info@robox-industries.com)

 +201210008719

 [Robox-industries.com](http://Robox-industries.com)

 [facebook.com/robox](https://facebook.com/robox)

 [linkedin.com/company/robox-industries](https://linkedin.com/company/robox-industries)

QR

